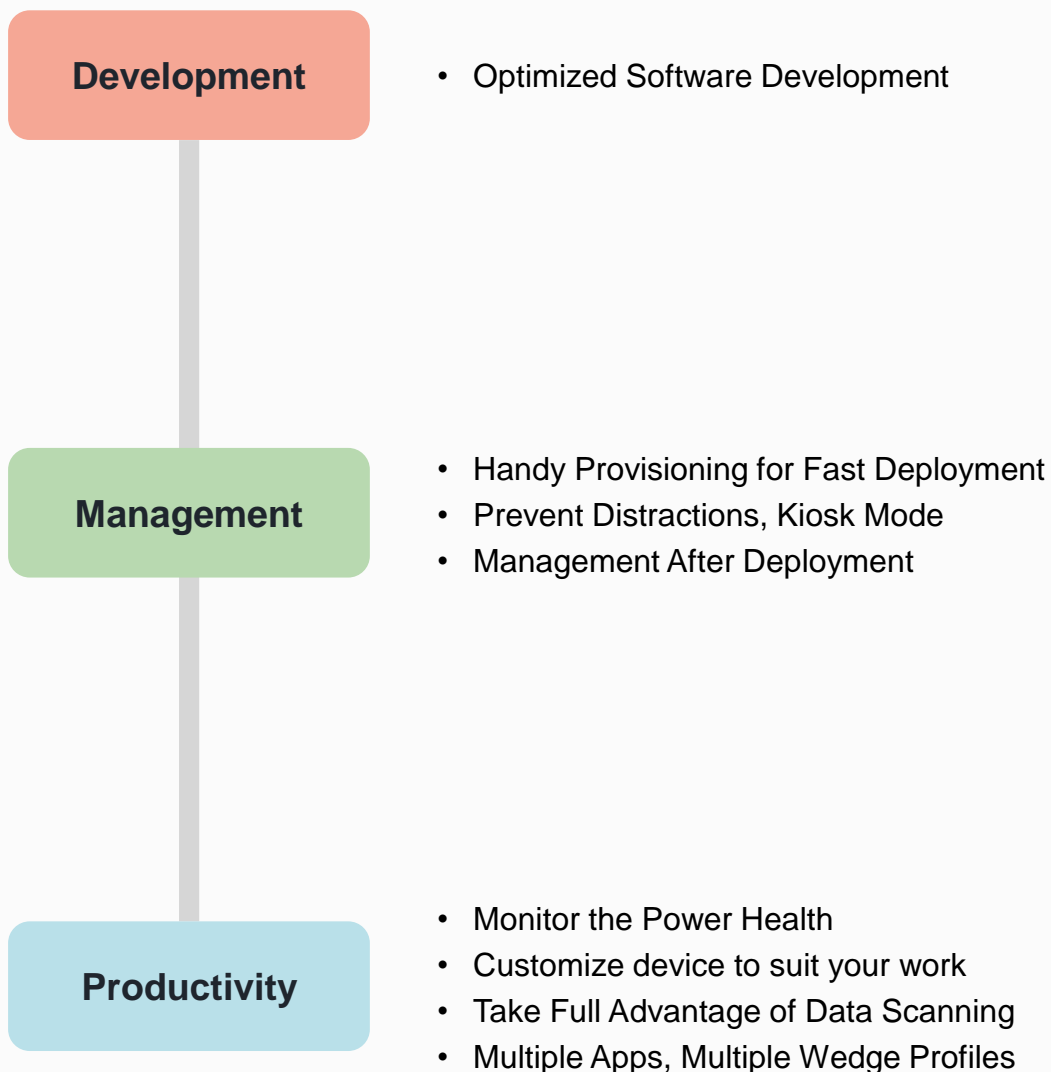




EmKit

EmKit contains the solutions that will be useful in all business situations you may encounter. Point Mobile will help you to increase the efficiency and competitiveness of your business. With EmKit, develop the enterprise functions easily and make the most of your devices.



Optimized Software Development



Unified SDK
for Android

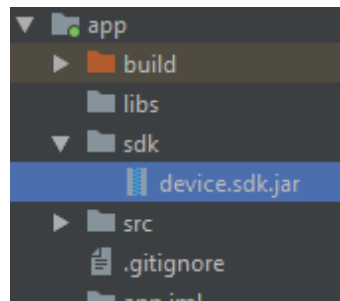


RFID
Development Kit

Unified SDK for Android & RFID Development Kit

EmKit provides a unified SDK including APIs that control the barcodes, SAM, MSR modules, etc., as well as the Google Generic SDK, so no separate SDK is required. And API document makes it easy to utilize the SDK.

Develop the enterprise functions faster and less costly with Development tools provided by EmKit.



Management

- Handy Provisioning for Fast Deployment
- Prevent Distractions: Kiosk Mode
- Management After Deployment

Handy Provisioning for Fast Deployment



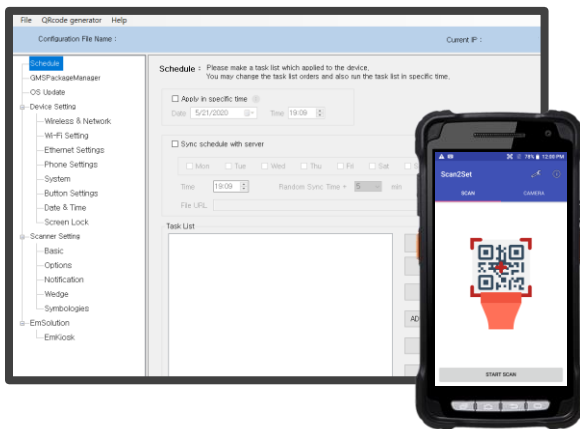
Scan2Stage

Scan2Stage & Scan2Set

Scan2Stage is a solution for provisioning Point Mobile devices. Using Scan2Stage, you can easily configure the device settings and generate secured QRcode with no programming knowledge. Your devices will complete the provisioning process automatically by simply scanning the QRcode with Scan2Set.



Scan2Set



Scan2Stage Available Feature

- Configure device and scanner settings
- Enable or disable GMS packages
- Perform OS update
- install & launch applications
- Restrict system features
- Define keypress behavior
- Configure EmSolutions (EmKiosk, WedgeProfiler, etc.)

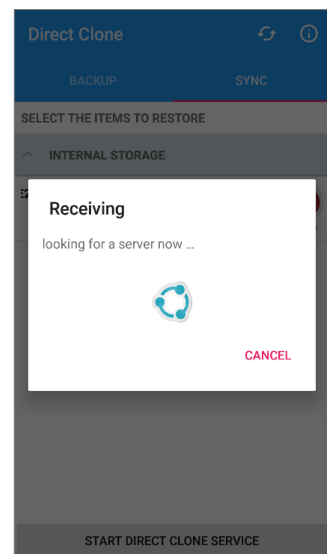
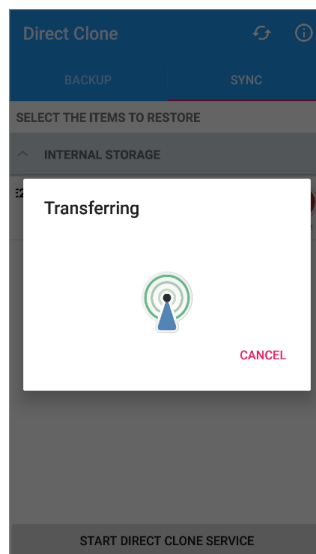
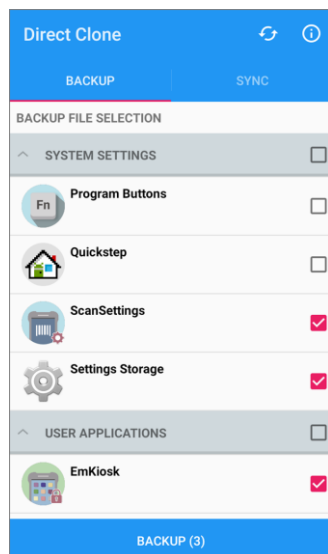


Direct Clone

Direct Clone

Direct Clone is a powerful way to provision devices in close range without an internet connection.

Configure the desired settings on a master device and run Direct Clone to make the device act as a local server. The server transfers the backup file containing its own settings to nearby client devices and makes them restore the settings.



Management

- Handy Provisioning for Fast Deployment
- Prevent Distractions: Kiosk Mode
- Management After Deployment

Prevent Distractions: Kiosk Mode



EmKiosk

EmKiosk & EmKioskConfig

Implement the completely controlled single-purpose device. You can prevent distractions by restricting the available features and applications.



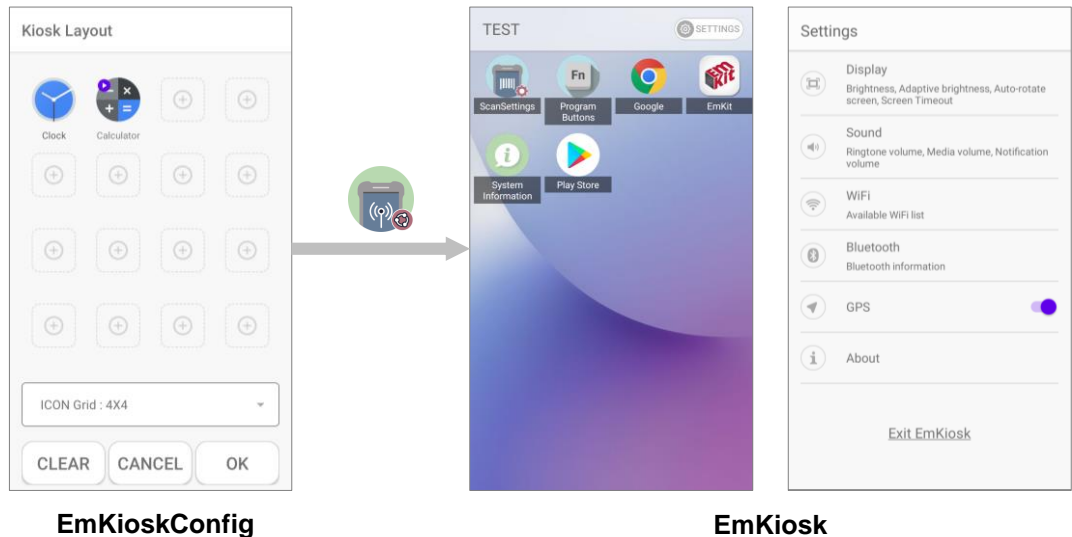
EmKioskConfig

Available Restriction of EmKiosk

- Accessible apps
- Screenshot, debugging, MTP connection, storage access
- Accessible device settings
- Screenlock

** EmKiosk is available on PM500, and the devices with Android 8.1.0 and above*

EmKiosk can be configured by Scan2Stage (PC Tool) or EmKioskConfig (Android app). EmKioskConfig provides intuitive UI and it helps you make all EmKiosk configurations easily using a single device. And the configuration can be deployed to nearby devices fast using Direct Clone.

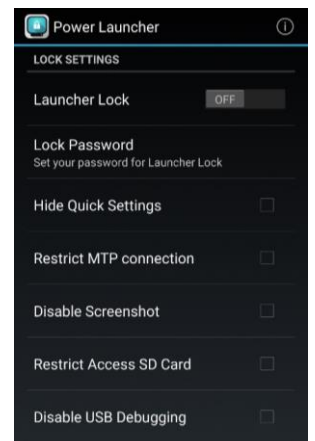


Power Launcher

Power Launcher

Implement basic kiosk mode with Power Launcher. Power Launcher locks the users on the home screen and restrict some system features.

** Power Launcher is available on Android 8 and below devices.*



Management

- Handy Provisioning for Fast Deployment
- Prevent Distractions: Kiosk Mode
- Management After Deployment

Management After Deployment



EmSync

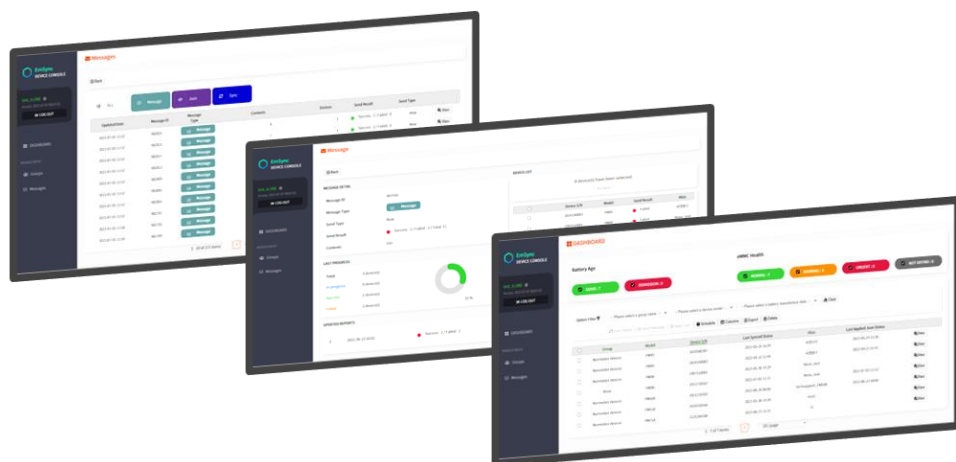
EmSync

Experience efficient management of the deployed devices. The registered devices are synced through EmSync server and ready to receive the configuration JSON file. EmSync provides visibility of the device health so that you can foresight the replace time and prevent interruption.



Major Features of EmSync

- Monitoring the devices – provides visibility of the battery, eMMC status
- Managing by group – groups the devices by working area or type, etc.
- Sending and Applying JSON file – provides full management features (implement configuration, OS update, etc.)
- Sending messages – makes the users to do something you want



Management

- Handy Provisioning for Fast Deployment
- Prevent Distractions: Kiosk Mode
- Management After Deployment

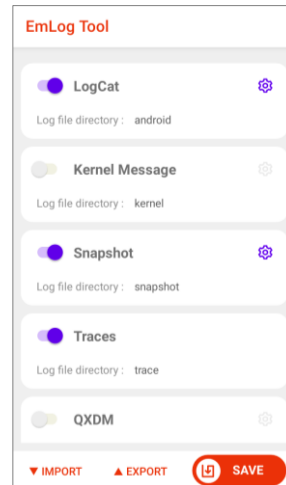
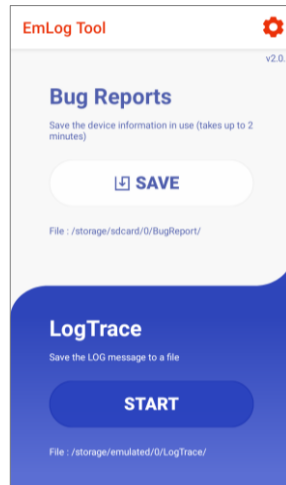
Management After Deployment



EmLogTool
/LogTrace

Integrated Logging Solution: EmLogTool, LogTrace

Take the log to analyze the issue you have.
EmLogTool/LogTrace provides centralized control of taking various types of log.



PULS

Manage Device Lifetime: PULS

Extends the lifetime of our Android devices to up to seven years after product launch. The services provided by PULS support FOTA(Firmware Over The Air), so you can install the new OS and security patches from anywhere if you can connect to the network.

Services

1. Security patches
2. System update & upgrade

Productivity

- Monitor the Power Health
- Customize device to suit your work
- Take Full Advantage of Data Scanning
- Multiple Apps, Multiple Wedge Profiles

Monitor the Power Health



EmHealthReport

EmHealthReport

If the performance of enterprise devices deteriorated, so does the productivity of work. So you should manage the device by monitoring the device status and predicting the device's lifetime. EmHealthReport provides intuitive information of battery and eMMC to help you easily identify their health and when they need to be charged or replaced.

Battery Health

- Battery Level
- Battery age
- Battery Voltage
- Battery Temperature
- Battery Manufacture Date
- Battery Serial Number

eMMC Health

- Pre-EOL Information
- Device life time estimation type A/B

Customize device to suit your work



Program Buttons

Mapping HW Buttons: Program Buttons

Map frequently used functions to easily reachable hardware buttons. Program Buttons provides button-related features such as key mapping with rich pre-assigned functions, preventing mispressing the power button, and applying KCM file.

Improve the convenience and productivity in any production environment.

PROPERTIES	DEFINITION	ADVANCED
SCANNER_R	NoAction	
SCANNER_L	DoScan	
SCANNER_B	DoScan	
HOME	HomeKey	
BACK	BackKey	
APP_SWITCH	AppSwitchKey	
VOLUME_UP	RightKey	
VOLUME_DOWN	DownKey	
FUNCTION	FuncKey	



Touch Sensitivity

Even in Rain or Wearing Gloves: Touch Sensitivity

Adjust the touchscreen sensitivity to suit your work environment. Increase the sensitivity to detect dull touch when you wearing gloves, or decrease the sensitivity to response a little dull when the touch screen is wet.

Touch Sensitivity
<input type="radio"/> Wet Touch Wet or rain condition mode (Finger touch only)
<input checked="" type="radio"/> Normal Touch Finger touch and Stylus pen mode
<input type="radio"/> Comfort Glove Touch Comfort Glove mode
<input type="radio"/> Cotton Glove Touch Cotton Glove mode

Productivity

- Monitor the Power Health
- Customize device to suit your work
- Take Full Advantage of Data Scanning
- Multiple Apps, Multiple Wedge Profiles

Take Full Advantage of Data Scanning



ScanSettings

ScanSettings

Manage the settings about scanner in ScanSetting. You can enable/disable the features such as illumination, auto scanning, symbologies, etc. and also can set following features.



TouchScan

TouchScan

Place the virtual scan button wherever you want on the screen and tap the button to read a barcode instead of the hardware button. The virtual button provides flexibility of capturing action.



MultiScan

MultiScan

Regardless 1D or 2D, you can scan multiple barcodes with a single scan. With MultiScan, you can improve efficiency by eliminating time-intensive process of scanning each one individually.



PEW

PEW (Powerful Extended Wedge)

Customize the barcode data to suit your tasks. Various customizing styles can be set, such as changing a specific part of data or adding some string. PEW provides flexible support of various use cases.

Multiple Apps, Multiple Wedge Profiles



WedgeProfiler

WedgeProfiler

Each app can take its own data capture rule using WedgeProfiler. While an app is running, the system delivers the scanned data using the wedge profile associated with the app instead of the global settings.

In the use case of using multiple work apps on a single device, WedgeProfiler expands the usability of scanner.

Major Strength of WedgeProfiler

- Easy making the wedge profile and associating apps
- Provides seamless profile switching with real-time checking of foreground app
- Massive deployment using Scan2Stage