

Package contents



This package contains:

- PM260 Terminal
- Stylus pen
- AC/DC power adapter
- AC plugs
- Battery pack
- Hand strap
- Quick reference manual
- Belt clip
- LCD screen protector
- USB ActiveSync cable
- Regulatory sleeve
- EULA sleeve

Product overview

Front



Product overview

Back



Keyboard



- ESC** - Cancel current entry or action
- BKSP** - Clear last entered digit or symbol
- ENT** - Enter key
- SCAN** - Starts barcode scanning
- Navigation key** - Navigates through interface
- F1 - F11** - Programmable functional keys
- 1 - 0** - Digit keys
- .** - Inserts dot sign

- SP** - Inserts space
- Red key** - Access special characters
- Blue key** - Access 2nd level functions
- ALPHA** - Changes letters case and switches between digits and letters
- Blue key + windows key** - Suspends or wakes up device (Press Blue key first)



HANDY TERMINAL Quick Reference Manual

PM260

Getting Started

1. Open the cover



Slide the lockers upwards and remove the cover by pulling on it with your finger.

Getting Started

2. MicroSD card



Micro SD Card is sold separately.
Please contact your dealer.
Micro SD Card is supported up to 32GB.

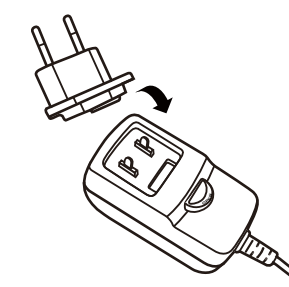
Getting Started

3. Insert the battery

First, insert the battery into the battery well with the labels facing upward.
Close the cover from the bottom and push down the cover until it locks properly.



4. Attach the plug



5. Charge the battery



Using AC/DC Power Adapter

Getting Started

Suspend and restart



Suspend mode works like the device is turned off. Press Blue key + windows key to suspend and press windows key one more time to wake up the device.



In case of system failure, press reset button with stylus pen. HT-K10 will be restarted when button is released.

How to scan

Scanner beam position





 Ideal position.


 A bit low - will read correctly

 A bit angled - will read correctly



 Too angled - cannot read the entire bar code.

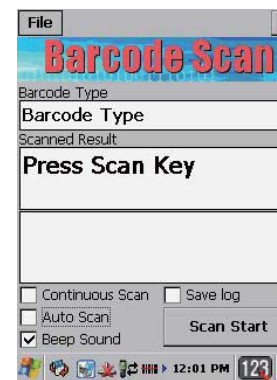
 Positioned too far to the right. Will not read entire bar code.

 Bar code will not be read. The scanner should be positioned perpendicular to the bar code bars.

How to scan

Software

Select *Start -> Programs -> Demos -> Scan Demo* to open the scanning application.



Touch the scan start button on the screen or press and hold one of the scan keys on device to start scanning.

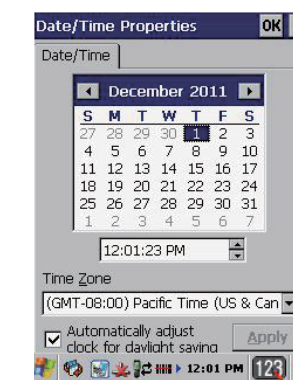
Aim the scanning beam at the center of the bar code so the beam is perpendicular to the bar code.

Depending on bar code size, position of the device should be closer when scanning small bar code, or keep its distance when the bar code is larger.

Date and Time

To change date and time

Select: *Start -> Settings -> Date/Time*



Set current date

Enter time

Select your time zone. Select automatically adjust clock for daylight saving option if needed.

Click OK to save new settings and close Date/Time Properties window.

About Bundle SW (CICO)

You can find the shortcut icon "CICO" of the bundle software on the desktop of this handy terminal.

How to perform "Item Check-in task"

When products or goods come into your place (office, warehouse, and so on), you can input the physical count of the goods into your Excel sheet by scanning through the built-in "bundle software" of your handy terminal which may reduce the possible human error, streamlining checking-in work.

How to perform "Item Check-out task"

When put out products or goods from your place (office, warehouse, and so on), you can input the physical count of the goods into your Excel sheet by scanning through the built-in "bundle software" of your handy terminal which may reduce the possible human error, streamlining checking-out work.

How to perform "Physical Counting"

By easily scanning your physical inventory, you can record the inventory counts into your Excel sheet which allows you to find differences between Book QTY and physically stored inventory. Plus, physical counting program guides you to tag items' quality state such as defective or normal to each item, while you're performing this job. Every moment of scanning the physical inventory, you can easily notice if difference exists or not by color change of count cell.

Please refer to the Bundle software (Item Check-In & Out / Physical Counting) User's manual for more information on how to use.

Optional Accessories

Single slot docking cradle



Single slot ethernet cradle



Standard battery (2200mAh)



High capacity battery (3300mAh)



Service and Support

Please contact your dealer or distributor for services and authorised repair center for technical services.

Reference Documentation

For further information regarding the terminal accessories, safety and regulatory, please refer to User manual.

Warning

⚠ Never apply strong pressure to the touchscreen or subject it to strong impact. If the LCD panel glass breaks, do not touch the liquid inside - it can cause skin inflammation.

⚠ Use only the AC/DC power adapter provided by us or authorized dealers. The use of any other power adapter can cause electrical problems, fire and/or electric shock.

⚠ Unauthorized modifications and/or repairs of HT-K10 will void the factory warranty. please contact your dealer for support.

Warning

⚠ Li-ion battery pack must be recycled or disposed properly. Li-ion batteries are subject to disposal and recycling regulations that vary by country and region. Follow your applicable regulations before disposing of any battery. Do not put in fire, apply heat to, disassemble or short circuit.

⚠ This device is rated at IP65 standard for water and dust protection but we do not recommend to use it in extremely rainy, dusty, and/or windy conditions. If environmental conditions exceed the standards for IP65, the industrial seal may fail, voiding the factory warranty.

⚠ Always keep the plug and outlet clean. Prevent them from accumulating dust and dirt. This could cause a fire and give you an electric shock due to the heat released by electric leakage.